



Fact sheet Velodrom

Venue specifications

Postal & delivery adress

Velodrom
c/o Velomax Berlin Hallenbetriebs GmbH
Paul-Heyse-Straße 26
10407 Berlin
Germany

Contact

Phone: 030 44304-5
Fax: 030 44304-709
E-Mail: info@velomax.de
Web: www.velodrom.de

General information

Architect Dominique Perrault

Point-symmetric cycling track made of Sybirian spruce Length 250 m

Europe´s largest self-supporting steel roof

Steel used 3,500 t

Roof diameter 115 m

Bowl diameter 142 m

Total area of property 49,262 m²

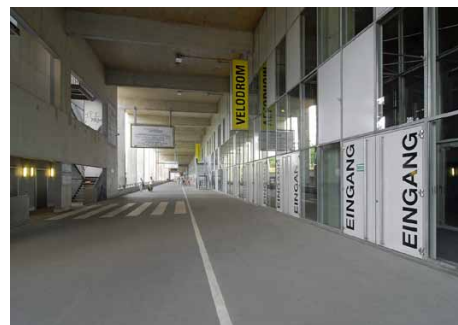
Gross floor space 93,320 m²



Entrance level E1



Velodrom



Main entrance



Station Landsberger Allee



PARTNER & MITGLIED DES





Arena

General information

Can be fully blacked out

16 permanent food stands

Trucks can enter the event area

Max. floor load of arena and vehicle entrance Equivalent uniform load
 $p=16,7 \text{ kN/m}^2$

Total ceiling load capacity 50 t
 (single point max. 7,5 t)

Wi-Fi in the arena and the press areas can be accessed using voucher system

Dimensions

Arena including SI-Streifen 68 m x 38 m
 Approx 2,718 m²

Arena excluding SI-Streifen 68 m x 44 m
 Approx 3,233 m²

Area corridors E0, E1 and foyer Approx 6,675 m²

Ceiling height 13,00 m

Power supply

Arena Over 1,800 kW

Ceiling Over 480 kW

Car park level U1 2 x 63 A CEE
 6 x 32 A CEE

Capacities

Seats on stands 5,668

Standing room Max. 4,904

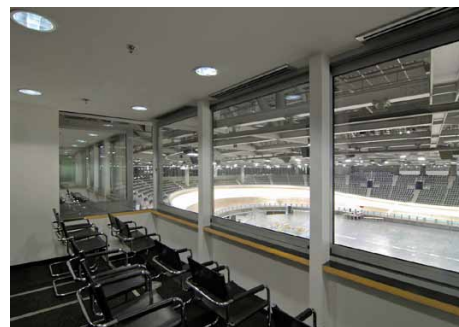
Standing corridor E1 Max. 1,110

VIP box 6 x 12

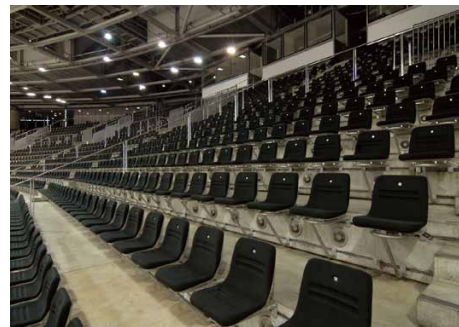
Wheelchair seating Min. 48



Entrance arena



VIP-box



Audience stand



Cycling track



Arena/ infrastructure

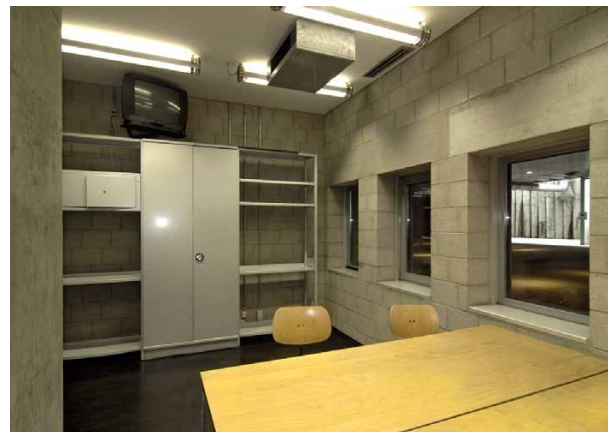
Backstage area	
Production offices	7 offices
Dressing rooms	19 dressing rooms 10 artist rooms
Crewcatering (95 m ²)	1 x 63 A CEE 2 x 32 A CEE 4 x 16 A CEE
Telephone system with itemized billing	
Internet access via LAN	10 MBit/s SDSL

Stage	
Mobile stage system with stairs, skirting & railings	
Stage height	1,00 m-1,66 m
Up to 216 m ² stage is available	

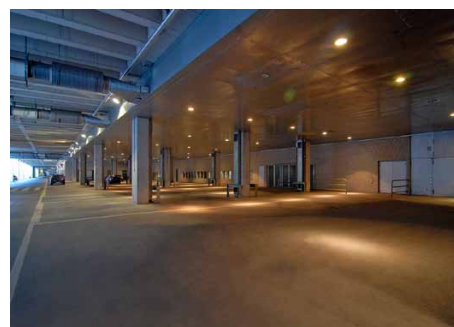
LED walls	
2 x 12 m ² LED-wall	Pixel distance 17 mm
1 x 42 m ² LED-wall (divisible)	Pixel distance 7,62 mm

Sound- and lighting system	
Decentralized sound system	
Floodlights (cold-start HQI-discharge lamps)	159 x 2 kW 166 x 2 x 400 W 34 x 400 W 40 x 250 W
Total power	474 kW

Mobile conference technique	Mini-DV-Camera- Recorder Camera stand Press splitter Beamer Screens Conference mikrophones Wireless mikrophones Speakers DVD-Player DVD-Recorder
-----------------------------	---



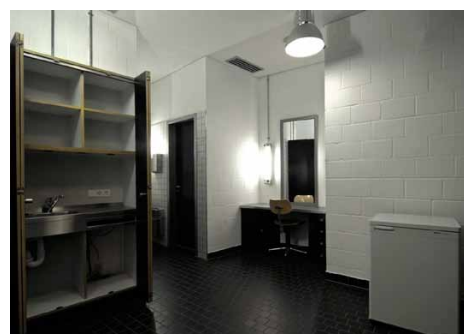
Production office



Car park level U1



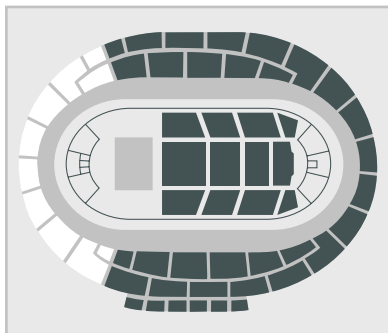
Kitchen crewcatering



Artist room

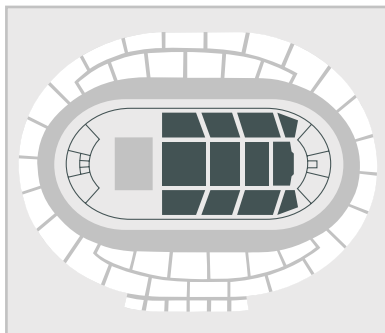


Seating arrangements



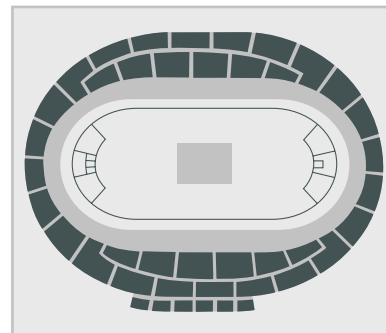
1. Row seating with front stage

Stage area: 26 x 16 m
Capacity: approx. 7.000



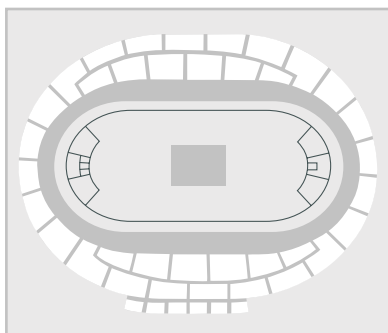
1.1. Row seating, middle variant with front stage

Stage area: 26 x 16 m
Capacity: approx. 2.600



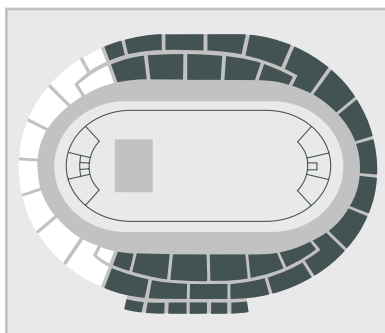
2. Concert with center stage, no seating

Stage area: 20 x 14 m
Capacity: approx. 12.000



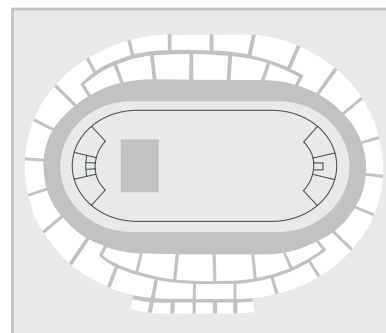
2.1. Concert with center stage, middle variant, no seating

Stage area: 20 x 14 m
Capacity: approx. 4.900



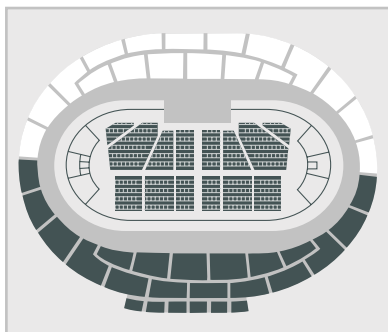
3. Concert with front stage, no seating

Stage area: 26 x 20 m
Capacity: approx. 9.800



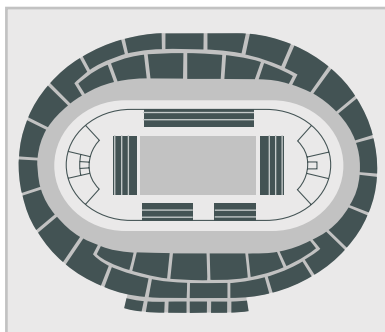
3.1. Concert with front stage, middle variant, no seating

Stage area: 26 x 20 m
Capacity: approx. 4.900



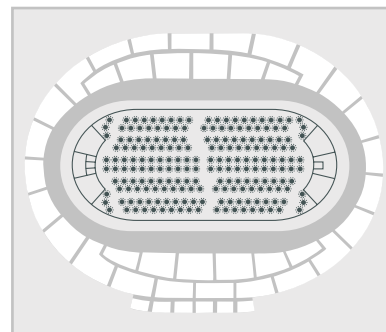
4. Parliamentary seating with side stage

Stage area: 20 x 7 m
Capacity: approx. 1.200



5. Sporting event with additional platforms

Capacity: approx. 8.200



6. Gala event with seating at round tables for ten people each

Capacity: approx. 1.900



Corridors level E0 and E1

General information	
Cloakrooms	8
Food stands (both levels)	16
Area corridor level E0	2,820 m ²
Area corridor level E1	2,820 m ²

Foyer

Main foyer	
Width	21,30 m
Length	23,80 m
Area	500 m ²
Power supply	1 x 32 A CEE 2 x 16 A CEE
Capacity row seating	250
Capacity no seating	500

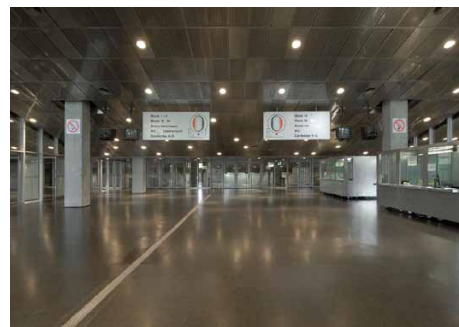
Side foyers	
Width	9,50 m
Length	24,50 m
Area	Each 254 m ²
Power supply	2 x 32 A CEE
Capacity row seating	180
Capacity no seating	315
Water supply	Fresh water available Wastewater connection



Corridor level E0



Corridor level E1



Main foyer, main entrance



Side foyer



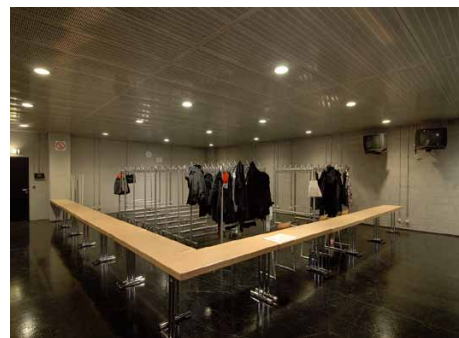
Press rooms

Press room A	
Width	9,40 m
Length	15,90 m
Free length	13,75 m
Height	2,95 m
Area	150 m ²
Power supply	1 x 32 A CEE 16 A Schuko
Capacity row seating	154
Capacity no seating	300
Data network	Wi-Fi available

Press room B	
Breite	10,52 m
Länge	12,30 m
Freie Länge	10,85 m
Höhe	2,95 m
Area	130 m ²
Power supply	1 x 32 A CEE 16 A Schuko
Capacity row seating	138
Capacity no seating	250
Data network	Wi-Fi available



Press room A



Press room A: cloakroom



Press room B: get together



Press room B: workshop



Seelenbinderhalle

General information

Can be divided with movable privacy walls into up to three sections

Rigging points 18 points 10 kN each

Maximum floor load 5 kN/ m²

Power supply 2 x 125 A CEE

Changing rooms 6

Dimensions

Free width 27 m

Free length 49 m

Area 1,215 m²

Height 6 m

Capacities

Seats on audience stand 198

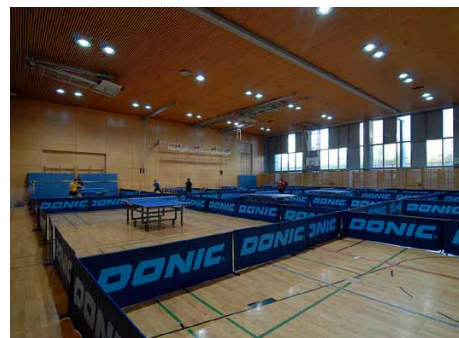
Capacity no seating 945

Capacity row seating 945

Capacity parliamentary seating 764



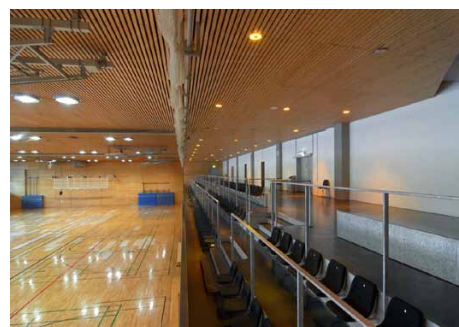
Seelenbinderhalle



Seelenbinderhalle: table tennis



Seelenbinderhalle: VIP-lounge

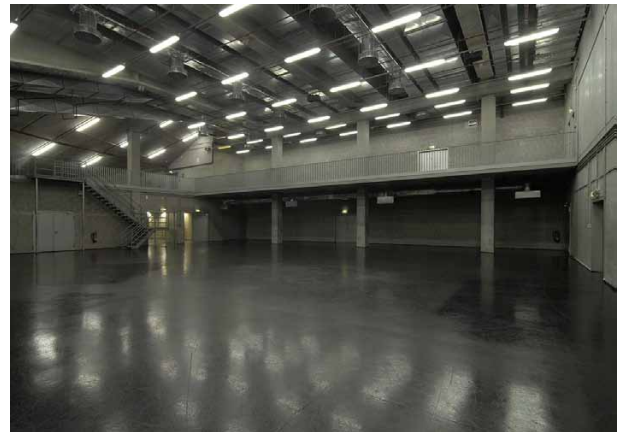


audience stand



Gallery room

General information	
Rigging points	8 points 10 kN each
Power supply	2 x 63 A CEE 2 x 32 A CEE 4 x 16 A CEE
Capacity no seating	1,255
Capacity row seating	500
Dimensions	
Free width	20 m
Free length	24,50 m
Area	590 m ²
Height	7,30 m
Height underneath gallery	5,70 m
Height of gallery lights	3,40 m
Free length gallery	24,50 m



Gallery room



Gallery room: set up tv commercial



Entrance gallery room

